

FDIS

Solar DC Waterproof Isolator Switch



Application

- Compact and suitable where space is limited
- DIN rail mounting for easy installation
- Load-breaking up to 8 times rated current making it ideal for motor isolation
- Double-break with silver rivets-superior performance, reliability and long lasting
- Highly visible red/yellow handle
- Large padlockable red/yellow or grey/black handles
- Comprehensive range, 16 to 32A models
- High IP 65 rating
- High breaking capacity with 12.5 mm contact air gap
- Easy to install and operate
- Easy snap-on fitting of auxiliary switches

Specification

3/4 Pole FDIS Switch					
Main contacts	Type	FDIS-63			
Rated thermal current I _{th}	A	16	25	32	
Rated insulation voltage U _i	V	1000	1000	1000	
Rated operational current I _e DC21 B					
2 pole in series	600V	A	16	15	32
	600V	A	29	45	50
2 pole in series + 2 poles parallel	900V	A	13	16	20
	1200V	A	9	11	13
3 poles in series	900V	A	16	25	32
	1000V	A	16	25	32
4 poles in series	600V	A	16	25	32
	600V	A	16	25	32
	600V	A	16	25	32
Rated operational current I _e DC22B					
2 poles in series	600V	A	5.5	6	6.5
	900V	A	1	2.5	3
	1200V	A	1	1.5	2
3 poles in series	600V	A	16	23	25
	900V	A	6.5	7	7.5
	1200V	A	5.5	6	6.5
4 poles in series	600V	A	16	25	27.5
	1000V	A	11.5	12	12.5
	1200V	A	8	9	110
Rated conditional short-circuit current	A	5	5	5	
Mechanical life	x10	10	10	10	
Rated short-time withstand current(I _s)	2, 4/2+2H	A	800/1300	900/1500	1000/1700
Short circuit making capacity	I _{cm}		800/1300	900/1500	1000/1700

SOLAR DC WATERPROOF ISOLATOR SWITCH

DC isolators switch instructions

- It is important to ensure that all electrical connections(including factory connections) are tight, ensure that all terminal screws are tightened firmly.
- It is recommended that for DC, multi-stranded cable, crimp ferules are used to ensure that the wires do not become loose,loose cables can cause excessive watt loss and generate excessive heat causing severe damage to the switch.
- After installing and wiring the switch carry out the following test: switch on and off several times making sure that a positive snap action can be felt and heard.
- If the switch cannot be felt and heard to operate correctly then it is important that che switch is not used.

Polycarbonate IP66 or ABS IP65 enclosure.
Good UV and chemical attack resistance.

Stainless steel screw fixing

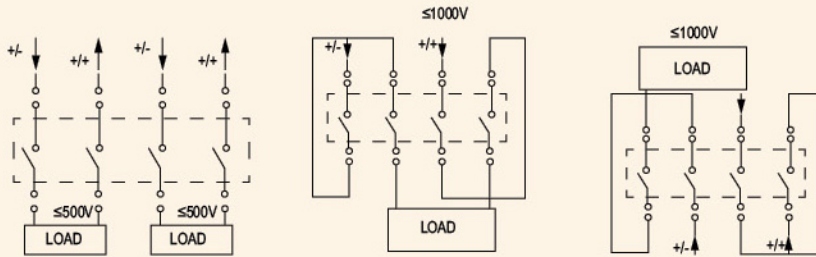
Retained handle, you do not
have to unscrew to remove cover

Provision for 3 padlocks

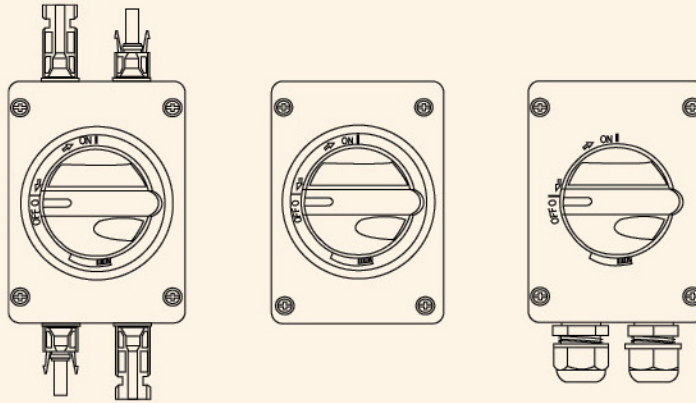


SOLAR DC WATERPROOF ISOLATOR SWITCH

Connection



Configuration



Dimensions

